

CORNER INVESTIGATION REPORT

FS INDEX ID: 0-21

CORNER: NORTH 1/16 GCDB ID: 600360 DATE: 5/1/2018
TOWNSHIP: 3S STATE: OREGON
RANGE: 8W COUNTY: TILLAMOOK
SECTION: 23 & 24 FOREST: SIUSLAW
MERIDIAN: WILLAMETTE DISTRICT: HEBO

NFSL PROPERTY BOUNDARY CORNER?: YES NO

LINE(S) POSTED: SOUTH - 2018 EAST - 2018

MAINTAINED:

GUARD POST(S): SOUTH - 5.7 FT EAST - 3.0 FT

CORNER HISTORY:

- (1) NO RECORD LOCATED. ESTABLISHED 'WORKING' CORNER, MARKS 2 BT'S.
- (2) FOUND IRON PIPE & 2 BT'S.

MONUMENT FOUND/SET:

FOUND 1" IRON PIPE OUT OF POSITION. ESTABLISHED CORNER BY PROPORTION. SET 2-1/2"x28" ALUMINUM PIPE WITH A 3-1/4" ALUMINUM CAP, PROJECTING 2" ABOVE THE GROUND. CORNER POSITION FELL IN LARGE ROOT OF AN ALDER. FELLED ALDER & CUT OUT ROOT. MONUMENT NOW FALLS ON SW SIDE OF 20" ALDER STUMP WITH MONUMENT SIGN ATTACHED FACING MONUMENT.

RECORD CORNER ACCESSORIES:

- A 40" FIR STUMP BEARS, S54°06'W - 24.4 FT TO SPIKE SET IN CENTER TOP, WITH SCRIBE "N1/16S24BT" ON OPEN SINGLE BLAZE. (IMPROPERLY MARKED, LOCATED IN S23) (2)S55°W - 26.9 FT
- A 33" FIR STUMP BEARS, N68°15'E - 20.3 FT TO SPIKE SET IN CENTER TOP, WITH A HEALED SINGLE BLAZE. (2)N78°E - 20.6 FT

NEW CORNER ACCESSORIES:

- A 1" YELLOW PAINTED GALVANIZED IRON PIPE BEARS, N1°09'W - 3.4 FT TO TOP, PROJECTING 30" ABOVE GROUND, LEANS HEAVY NORTHWEST.
- A 18" ALDER BEARS, S53°45'E - 19.6 FT. MARKED "N1/16S24""BT"
- A 2-1/2"x28" ALUM. PIPE WITH 3-1/4" ALUM. CAP BEARS, S43°45'W - 24.7 FT, FLUSH WITH GROUND & MARKED "RM N1/16 S23 24.7 FT TO COR PLS89396 2018"
- NEW BT INCLUDES 3/4" BRASS WASHER BETWEEN "B" & "T" SCRIBES.

CORNER MAINTENANCE/OTHER INFO:

CLEAR BRUSH FROM AROUND MONUMENT & TO BT'S, BT FACES & A 6" BAND AT HEAD HEIGHT PAINTED RED. ADD NEW NAILS TO BT TAGS & ADD NEW TAGS WHERE NEEDED. MONUMENT SIZES ARE OUTSIDE DIAMETER & BT DIAMETERS ARE AT BREST HEIGHT.

NFSL LINES BEAR: N88°51'22"E - 1280.90 FT & S1°08'08"E - 1303.92 FT

GEODETIC COORDINATES:

LATITUDE: N 45° 17' 54.15790"
 LONGITUDE: W 123° 37' 36.38883"
 ELLIPSOID HEIGHT: ~1690 FT

DOCUMENTS ON FILE AT:

WILLAMETTE NATIONAL FOREST
 3106 PIERCE PARKWAY, STE D
 SPRINGFIELD, OREGON 97477

DATUM: NAD83(2011), EPOCH:2010.0000

SOURCE: CONSTRAINED LEAST SQUARES NETWORK ADJUSTMENT, SEE MAP.

DATE OF INVESTIGATION: 2/15/2018

REPORT BY: JONATHAN B. DERW II, PLS 89396, CFedS#1664

FIELD CREW: JONATHAN B. DREW II, PLS#89396, CFedS# 1664
 WAVERLY K. HAYNER, BLM SURVEY TECH
 GENE DAGUERRE, BLM SURVEY TECH
 MATT ZEPPEIRI, USFS FORESTY TECH

HISTORY OF VISITATIONS:

- (1)1964 - L. WHITMORE, PER BT TAGS
- (2)1972 - G. WHITMORE, BLM CORNER CARD RECORD

REGISTERED
 PROFESSIONAL
 LAND SURVEYOR

Jonathan B. Drew II

OREGON
 DECEMBER 3, 2014
 JONATHAN B. DREW II
 89396

EXPIRES: 12/31/2019

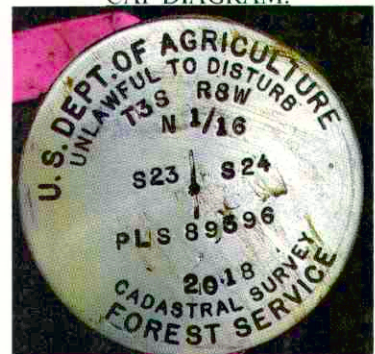
RECORD MEASUREMENTS:

METHOD OF MEASUREMENT:

TRIMBLE S7 TOTAL STATION, SEE RECORD OF SURVEY FOR BASIS OF BEARINGS & OTHER INFORMATION.

BT BEARINGS TO CENTER, DISTANCES TO AN ALUMINUM NAIL SET AT SIDE CENTER.

CAP DIAGRAM:



THIS DOCUMENT FILED IN CS OFFICE: YES

OTHER DOCUMENT FILED WITH CS: RECORD OF SURVEY

